

Legion Veterans Village



National Association of Federal Retirees



Legion Veterans Village

Legion Veterans Village (LVV) is Canada's first integrated Centre of Excellence for Veterans & First Responders focusing on post traumatic stress disorder (PTSD), mental health and rehabilitation. Led by the BC/Yukon Command of the Royal Canadian Legion, together with Whalley Legion Branch 229 and Lark Group in Surrey B.C., this unique **\$312-million**, multi-purpose project will be the first of many such projects across Canada.

Project Iron Soldier



After surviving attack in Afghanistan, B.C. man serves as inspiration for new centre for veterans



By Jon Azpiri & Kylie Stanton • Global News

Posted November 11, 2020 3:20 pm • Updated November 11, 2020 5:09 pm

Unti



A Canadian soldier who was attacked with an axe to his head 14 years ago is making remarkable progress, thanks to new research done in B.C. Kylie Stanton reports - Nov 11, 2020



FILE PICTURES

CBC VANCOUVER NEWS

SOLDIER'S TRAGEDY INSPIRES CHANGE

CBC/Radio-Canada is a Canadian public broadcast service. [Wikipedia](#)

Legion Veterans Village Vision

Legion Veteran's Village commits to change the current standards of care for veterans, first responders and citizens in the Canadian communities served by the Legion, through an innovative combination of mixed medical and clinical services, housing options, and retail spaces all located adjacent to Legion Branch 229 Operations and Cadet-Community Hall.

Our goal is to create the highest quality integrative center of healthcare excellence that prioritizes the translation of the most innovative and transformative research into accessible evidence-based practice.



Centre of Excellence

LVV will generate active research and science collaborations, as well as utilize multiple innovative technologies, clinical, offer teaching and rehabilitation spaces all specifically focused on transforming care for Veterans while building an integrated continuum of programs and services for suffering Veterans, First Responders, and their families.

Integrated Clinical Care Models

- One stop and concierge care - Unique Interdisciplinary Programs and Services for Veterans, First Responders and Community – Promotion (Health), Prevention(disability and disease), Early interventions and Recovery/Rehab/Return to work.
- Building and providing research and evidence-based practices.
- Bringing in innovation, research, technology to the clinical fronts to provide cutting edge treatments.
- Attracting talented and passionate clinicians and partners to build a pan Canadian network

Research & Teaching

- • Clinical Internships and Training for all Clinical Disciplines
- • Building evidence in both Engineering, Neuroscience and Social Sciences
- • Partnerships with other teaching institutions

Innovation

- • Facilitating development and implementation of Innovative practices
- • Support ongoing Clinical trials and Studies in areas of PTSD, Mental Health and Rehabilitation
- • Partnerships within the LVV Innovation Hub

Support & Service

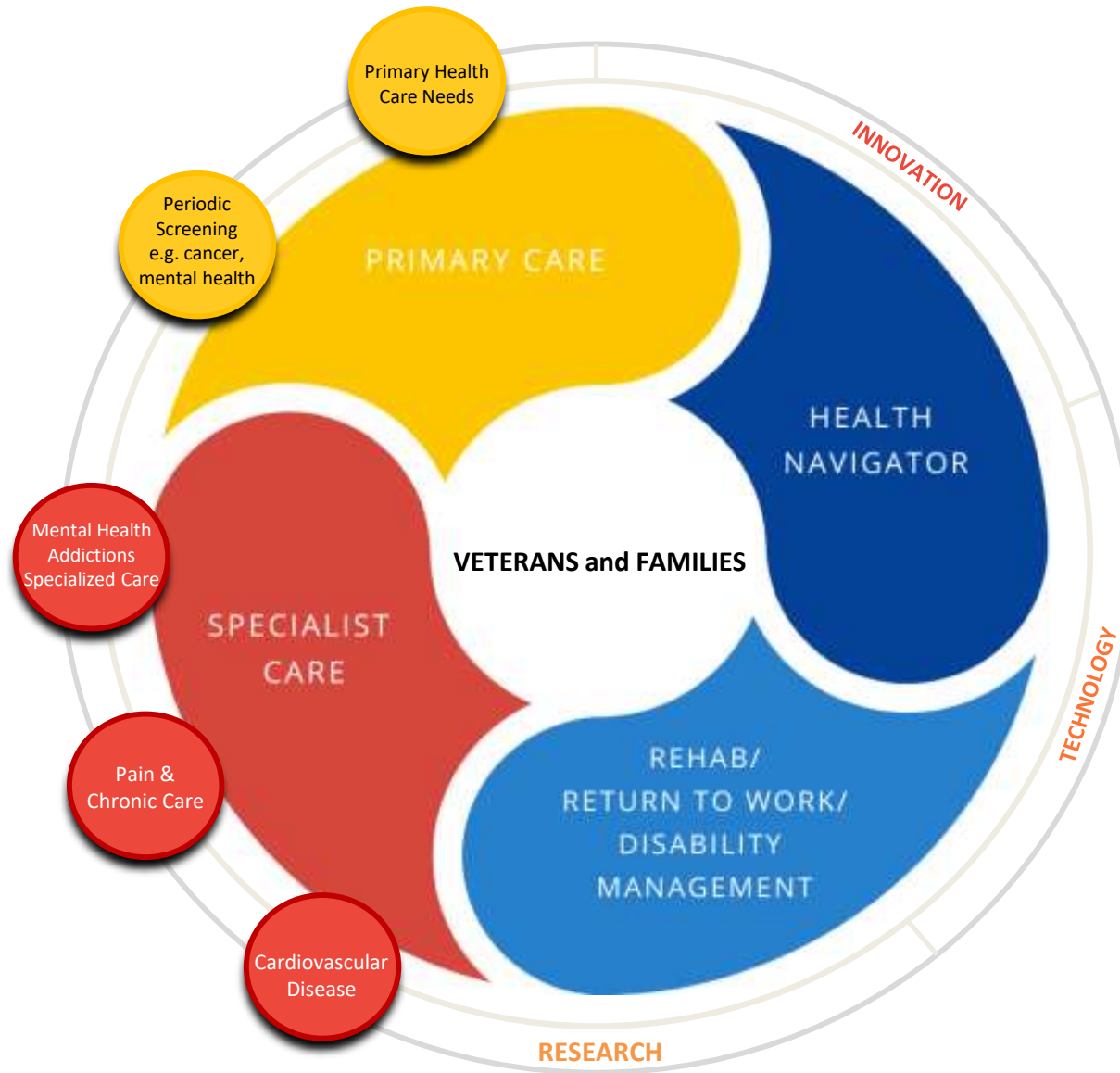
- • Responding to evolving needs of Veterans and First Responders and their families
- • Integrating supports and services to improve access and reduce gaps in care and services

Training & Leadership

- • Integrated vocational and training supports
- • Focused on building advancing practices to improve outcomes
- • Modeling/teaching best practice and “proof of concept” initiatives
- • Developing champions and building capacity in others to replicate successful models

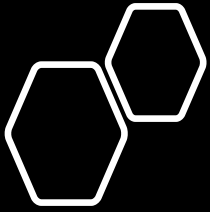
Partnership

- • Link to industry groups, professional associations, teaching institutions, clinical specialists
- • Building a Vision towards improved experiences for Veterans and First Responders.



Functional Programming

Operator		Scope of Service
Centre of Excellence Integrative Primary and Specialist Care	Combined 7,153 SF	Primary and Preventative Care, Mental health and Chronic Disease management (Pain, Cardiovascular and others) Includes Service Delivery, Research and Clinical Teaching
Innovation Centre for Rehabilitation Neuromotion Rehabilitation (Lokomat) Integrated Rehabilitation and Performance Shared Research and collaboration amenities supporting translational research	3500 SF as part of above 7,153	Mental Health Rehabilitation Excellence, Research and Teaching Centre
Whalley Legion Branch #229	10,500 SF	Legion and Cadet Operations; Assembly Hall/Multi-Cultural Community Centre
Affordable Housing VANCOUVER RESOURCES SOCIETY (VRS)	91 Units 62,775 SF	Mix of Studio, 1 & 2 Bdrm units with priority for Veterans, First Responders and their families – partnership with BC Housing
Mixed Market Housing ‘Parc Centrale’	93,864 SF 300,000 Gross SF	171 Mixed Market Housing Units – Phase I 325 Mixed Market Housing Units – Phase II



CIMVHR Partnership

- Research and knowledge mobilization in health and other domains
- Coordinating national and international project collaborations
- Co-hosting events such as conferences and workshops
- Providing collaborative space for events, research, and education
- Co-sharing best practices and knowledge to support health and well-being of military personnel, veterans, their families, and related groups



CIMVHR | ICRSMV
CANADIAN INSTITUTE FOR MILITARY
AND VETERAN HEALTH RESEARCH

Legion 
Veterans Village
BC/YUKON

Other Partnerships

We are committed to work collaboratively with all local and national partners including, but not limited to, the following Stakeholders and funding partners:

- ✓ Veteran's Affairs Canada
- ✓ Canadian Armed Forces
- ✓ BCPFFA
- ✓ RCMP E Division
- ✓ Emergency Health Services
- ✓ BCPA
- ✓ Corrections Canada
- ✓ Commissionaires
- ✓ Veterans Transition Network
- ✓ UBC
- ✓ SFU
- ✓ BCIT
- ✓ BC Yukon Command
- ✓ Royal Canadian Legion Dominion
- ✓ Order of Saint George
- ✓ BC Housing
- ✓ City of Surrey
- ✓ Vancity
- ✓ Coast Guard
- ✓ Pacific Blue Cross
- ✓ Worksafe BC
- ✓ Fraser Health
- ✓ Vancouver Coastal Health
- ✓ Operational Stress Injury
- ✓ Vancouver Resources Society
- ✓ Honor House
- ✓ Wounded Warriors
- ✓ Homes for Heroes
- ✓ Whalley Legion Branch 22
- ✓ Centre for Neurology Studies
- ✓ UBC Equine Therapy Program
- ✓ Citadel Canine



**LEGION
VETERANS VILLAGE**
RESEARCH FOUNDATION

1. to promote health by:

(a) conducting, commissioning and disseminating to the public research on mental health, post-traumatic stress disorder, neurological disorders and injuries, and related rehabilitative techniques and assistive technologies so as to alleviate and treat associated conditions, with a focus on veterans, first responders and their families; and

(b) providing financial assistance to persons affected by neurological disorders or injuries to be used for medical treatments that relieve and/or treat conditions attributable to neurological disorders or injuries and rehabilitative treatments, including the use of assistive technology or devices;

2. to advance education by organizing and delivering courses, lectures, symposia, conferences, workshops and presentations to the public at large on topics related to the field of mental health, post-traumatic stress disorder, neurological disorders and injuries, and related rehabilitative techniques and assistive technologies;

3. to receive gifts, bequests, funds and property, and to hold, invest, administer and distribute funds and property to such other organizations as are “qualified donees” under the provisions of the Income Tax Act (Canada); and

4. to do all such other things as are incidental and ancillary to the attainment of the foregoing purposes and the exercise of the powers of the Society.



LEGION VETERANS VILLAGE RESEARCH FOUNDATION



Surrey, BC (May 19, 2022) – The Royal Canadian Legion Maple Ridge Branch 88 together with the Earl Haig Society has gifted the Legion Veterans Village Research Foundation (LVVRF) a total of \$600,000 to initiate the ongoing mental health, PTSD, technologies and rehabilitation research within the LVV



Neuroimaging and neuromodulation

Use of multiple emerging and advanced technologies, including the Lokomat, the NeuroCatch® Platform (portable brain scanner) and the PoNS® stimulator (neuromodulation)





LEGION VETERANS VILLAGE CENTRE OF EXCELLENCE

A first-of-its-kind legacy

<https://legionveteransvillage.com/>